

ROOTPRINTS

Jim Oberstar Featured Speaker at Society's 90th Anniversary Annual Meeting of the Membership

Museum/Offices
St. Louis County
Historical Society
506 West Michigan St.
Duluth, MN 55802
218.733.7586
218.733.7585 fax
e-mail:
history@thehistorypeople.org
www.thehistorypeople.org

Archives
Northeast Minnesota
Historical Center
University of MN, Duluth
Library Annex Room 202
416 Library Drive
Duluth, MN 55812
Patricia Maus, Curator
218.726.8526

Affiliates
Ely-Winton
Historical Society
1900 E. Camp St.
Ely, MN 55731
218.365.3226

**Hibbing Historical Society
& Museum**
Memorial Building
23rd St. & 5th Ave.
Hibbing, MN 55746
218.263.8522

**Minnesota Museum of
Mining**
701 Lake St. W.
Chisholm, MN 55719
218.254.5543 and
218.254.2179.

Sisu Heritage Inc.
P. O. Box 127
Embarrass, MN 55732
218.984.3048

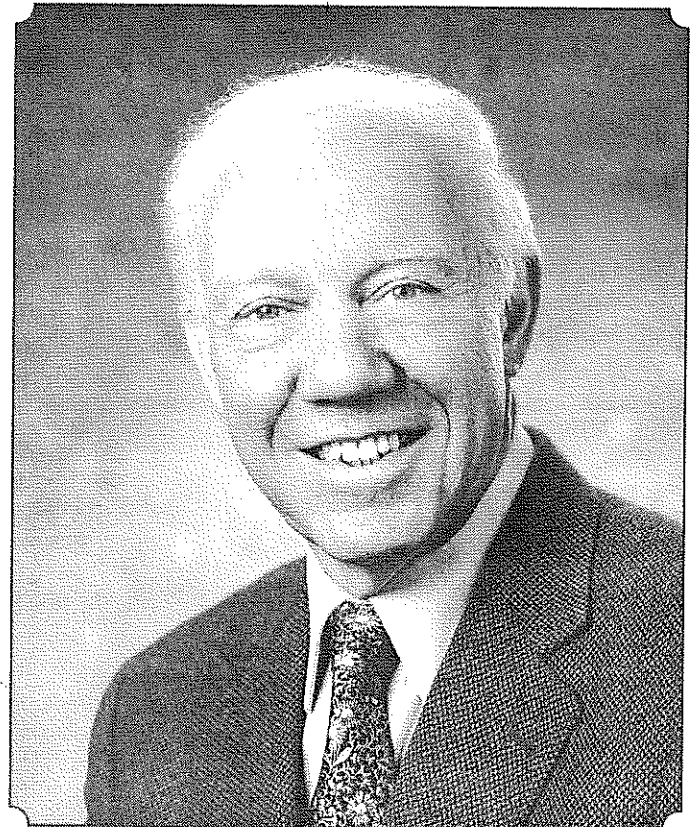
**Tower-Soudan
Historical Society**
404 Pine St.
P. O. Box 465
Tower, MN 55790
218.753.5021

**Virginia Area
Historical Society**
800 - 9th Ave. No.
P. O. Box 736
Virginia, MN 55792
218.741.1136

The Society's 90th Anniversary Annual Meeting of the Membership will be held on March 27, 2012, with the social hour beginning at 5:00 p.m., in the Great Hall of the St. Louis County Heritage & Arts Center (the Depot) and will feature an appropriately distinguished speaker, former U. S. Representative James Oberstar. The man who made history as the longest serving member of Congress in Minnesota history - 36 years - will discuss transportation history; Jim ended his tenure in the House of Representatives as Chair of its Transportation and Infrastructure Committee. The following brief biography of Mr. Oberstar was authorized by his office for publication in this issue of *Rootprints*.

Please see page 2 for more details and the menu. RSVP by March 21st to 218-733-7586 or susan@thehistorypeople.org

Jim Oberstar was born and raised in Chisholm on Minnesota's Iron



Former U. S. Representative James Oberstar

Range. His father, Louis Oberstar, was raised on the Range, where he met and married Jim's mother, Mary Grillo. Louis was an iron miner, first in the Godfrey Underground Iron Mine and then later in the open pits. Mary worked in the Arrow Shirt Factory in Chisholm to supplement the family income while she raised Jim and his two brothers.

His family and the

community instilled strong values in Jim that have guided him through his life. His father was instrumental in organizing workers to form a union at the Godfrey Mine, fighting for fair wages and a safe workplace. Jim recalls one day when his father came home early. "He was dirtier than usual and as white as a sheet," said Jim.

continued on page 2

